



NORWOOD VALVE, LLC  
PO BOX 18055  
HOUSTON, TX 77206  
(832) 691-2337  
[www.norwoodvalve.com](http://www.norwoodvalve.com)

Norwood Valve, LLC is a valve and equipment supplier located in Houston, TX. We support oil & gas pipeline & gathering production, chemical, power, and water industries. Working with manufacturers and stocking partners, we can help with an array of valve types for any application. Norwood Valve specializes in WHEATLEY & TOM WHEATLEY Check Valves. We work to carry on the Wheatley Family tradition of excellence in the valve industry going back to 1916.



## Valve Manufacturers and Types

**CAMERON  
WHEATLEY**



### WHEATLEY/TOM WHEATLEY

API 6D Swing Check Valves  
API 6D Piston Check Valves  
API 6D Nozzle Check Valves  
Threaded Swing Check Valves  
Wafer Check Valves  
Subsea Check Valves  
API 6A Swing Check Valves

**W-K-M**

**NUTRON**

**GROVE**

**GENERAL  
VALVE  
COMPANY**



**WKM** - Ball Valves, HP Butterfly Valves, Thru Conduit Gate Valves

**NUTRON** - Ball Valves

**GROVE** - Trunnion Ball Valves, Thru Conduit Gate Valves

**GENERAL** - Double Block & Bleed Plug Valves

**ORBIT** - Rising Stem Ball Valves

### CHECK-ALL VALVE

Silent Check Valves  
Spring Loaded Check Valves  
Poppet Check Valves  
Inline Check Valves



### STREAM-FLO

API 6D Swing Check Valves  
API 6D Piston Check Valves  
API 6D Nozzle Check Valves  
API-6A Swing Check Valves  
Wafer Check Valves  
Threaded Swing Check Valves

### STREAM-FLO FUSION

API 6D Trunnion Ball Valves  
Flanged Floating Ball Valves  
Threaded / Socketweld Ball Valves

### AMERICAN WHEATLEY

Triple Duty (TDV) Valves  
Suction Diffusers/Flow Diverters  
Non-Slam Check Valves  
Butterfly Valves  
Balancing Valves  
Y Strainers  
Fabricated Vertical Pipeline Strainers

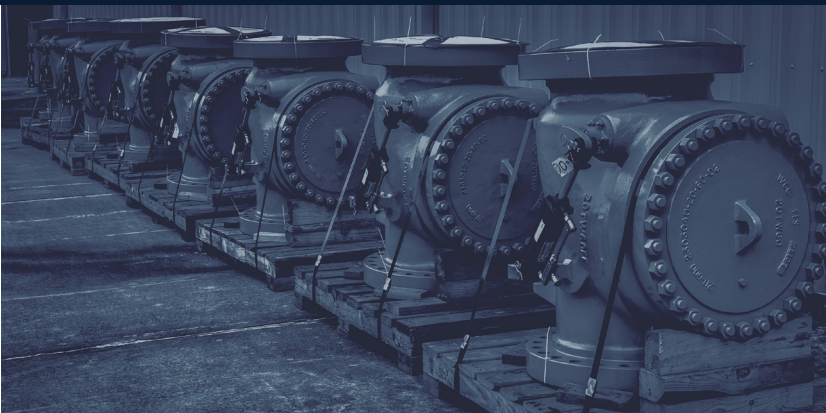


### CHAMPION VALVE

Wafer Style Dual Check Valves  
Wafer Style Rubber Lined Dual Check Valves  
Wafer Style Single Disc Check Valves  
Wafer Style Single Disc Short Pattern Check Valves  
Wafer Style Single Disc External Spring Check Valves  
Long Pattern Axial Flow Nozzle Check Valves



## Check Valve Modifications



Lock Open Lever / Gear Operator	Flange Face Change
Hydraulic Dampener (Slam Retarder)	(RF/RJ/WE)
Counterweight Assembly	Seal Change
Spring Return Clapper	Hydrotesting
Limit Switch / Position Indicator	Seat Overlay
Conduit Clapper	Conduit Clapper
Fusible Link	



## **WHEATLEY** Valve Parts

Tom Wheatley Co.  
Tom Wheatley Valve  
Frank Wheatley Pump & Valve  
Frank Wheatley Industries  
Frank Wheatley Fabricast  
FWI  
PLUG-A-ROO  
PLUG-A-RAMA

Wheatley Bros.  
Charles Wheatley Co.  
Chas Wheatley Valve  
Stream-Flo Tulsa  
Fitzpatrick Valve  
Robert Wheatly Valve

Wheatley  
Wheatley Pump & Valve  
Wheatley Geosource  
Wheatley Moorco  
Wheatley Gaso  
Wheatley TXT  
Wheatley Dresser  
Wheatley Cameron

*\*Current WHEATLEY Valve Model 510/511*  
*\*Current TOM WHEATLEY Valve Model 510/511*  
*\*Current TOM WHEATLEY Valve Ville Platte, LA*  
*\*Current TOM WHEATLEY Piston Checks OKC, OK*



## **WHEATLEY** Valve Legacy

1916, Brothers Frank and Tom Wheatley founded Wheatley Brothers Foundry & Machine in Kansas City, MO. By 1926, with an ever increasing demand for oilfield products in the mid-continent, Wheatley Bros. opened a facility in Tulsa, OK. Their new company, focused on oilfield equipment, was named Wheatley Bros Pump & Valve.

In 1934, the Wheatley brothers decided to part ways. Legend has it that the decision was made on a coin toss. This led to Wheatley Bros. becoming Frank Wheatley Pump & Valve. Tom moved to Houston, TX and founded Tom Wheatley Valve Company in 1936.

Yonger brother Charles Wheatley had a career as a professional baseball player. Charles made it to the Major League (Detroit Tigers) in 1912. He holds an AL record for most wild pitches thrown in a single game (5). Upon retiring from baseball, Charles went to work for his older brother Frank. In 1943, Charles left Frank Wheatley Pump & Valve and founded Charles Wheatley Company.

From this point the three brothers were competing and becoming leaders in the valve industry. Each had their notoriety for specific products, but all were known for check valves. FWI (Frank Wheatley Industries) was first to sell in 1968. In 1972, Tesoro acquired Charles Wheatley Company. Tesoro then purchased FWI as well in 1973. This led to the merger of Charles Wheatley Company and FWI, becoming The Wheatley Company. The Tom Wheatley Company sold in 1982.

Over the years the brands changed hands but persisted. In 1993 Wheatley TXT acquired Tom Wheatley Valve Co. This brought the Wheatley brothers' companies back together again after 59 years.